

## RP- PE844H

### **8-P Fast Ethernet Switch, w/ 4-P PoE+**

RP-PE844H is an 8 ports Fast Ethernet switch with 4 ports supporting PoE environment. With PoE function, the switch can supply power to the connected devices via CAT 5 and above twisted cables. By integrating the data transmission and power supply, it eliminates the effort of constructing your network. You could easily connect a Wireless AP or a VoIP phone to this switch without outlets for them. In addition, over current protection and circuit shorting protection are also supported to ensure the power supply safety.

RP-PE844H supports plug-and-play without any software to configure and is also fully compliant with all kinds of network protocols. Moreover, its rich diagnostic LEDs on the front-panel provide the operating status of individual port and whole system clearly.



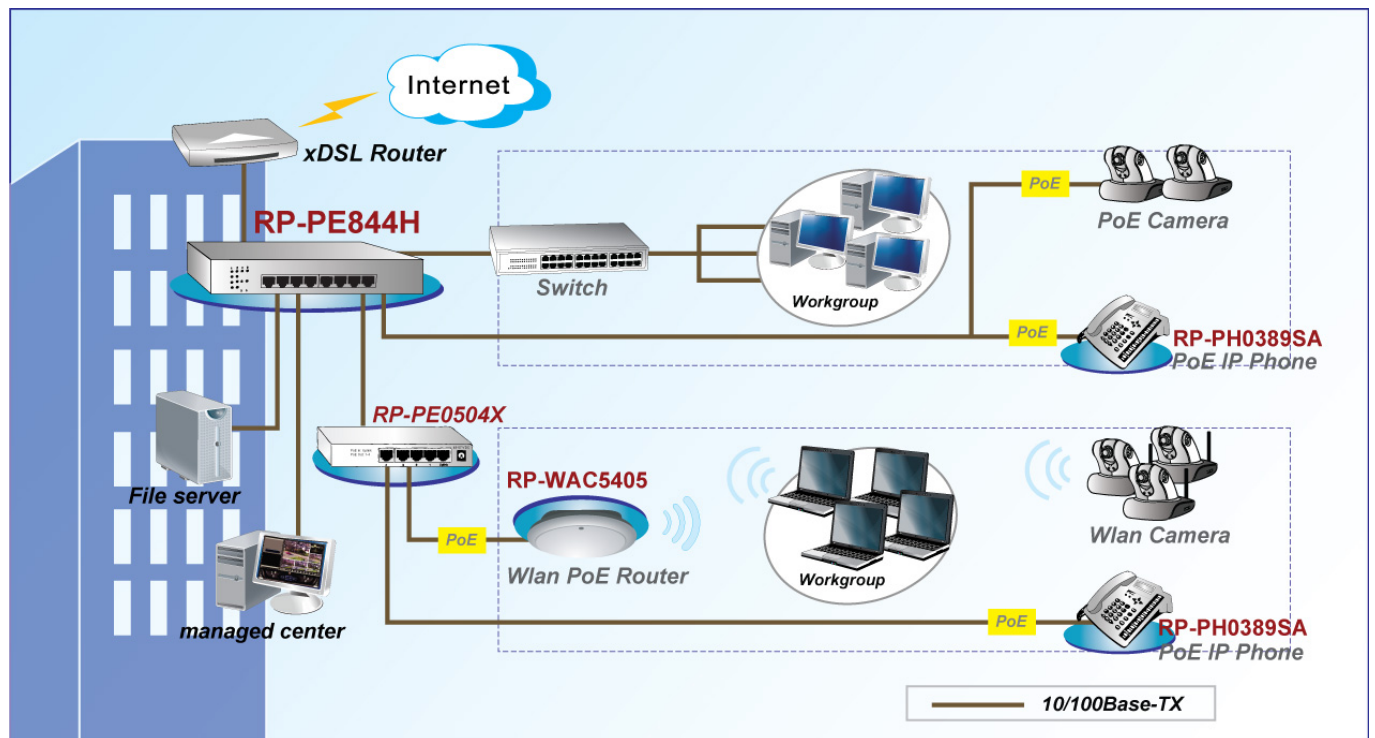
## Features

- Compliant with IEEE802.3af/at
- Deliver Power up to 328ft (100m)
- Plug and Play installation
- Provide 4 PoE ports with classification identify
- Simplified the installation of Ethernet based devices
- Auto Detection and protection of non-standard Ethernet terminal
- Pass Through Data Rates : 8-Port 10/100 Mbps

## Specifications

<b>Standards</b>	<ul style="list-style-type: none"> <li>• IEEE802.3, IEEE802.3u, IEEE802.3x,</li> <li>• IEEE 802.3at, 802.3af</li> </ul>
<b>Interface</b>	<ul style="list-style-type: none"> <li>• 8 * 10/100Mbps RJ-45 Nway ports</li> </ul>
<b>Data Transfer Rate</b>	<ul style="list-style-type: none"> <li>• Network speed: 10Mbps and 100Mbps</li> <li>• Duplex mode: Full and Half</li> </ul>
<b>Filtering/Forwarding Rate</b>	<ul style="list-style-type: none"> <li>• 10Mbps: 14,880pps/14,880pps</li> <li>• 100Mbps: 148,800pps/148,800pps</li> </ul>
<b>PoE Specification</b>	<ul style="list-style-type: none"> <li>• Pin Assignment: 1/2(+), 3/6(-)</li> <li>• Port 1 to 4: 802.3af/at PoE</li> <li>• Output power: Per port 15W / 30W</li> </ul>
<b>LED Indicators</b>	<ul style="list-style-type: none"> <li>• AC Power on</li> <li>• Ethernet status Link/Act</li> <li>• PoE Act/Status</li> </ul>
<b>PoE Power Budget</b>	<ul style="list-style-type: none"> <li>• 65W</li> </ul>
<b>Power Supply</b>	<ul style="list-style-type: none"> <li>• Internal Power supply 100~240VAC, 50/60 Hz</li> </ul>
<b>Environment</b>	<ul style="list-style-type: none"> <li>• Operating temperature : 0°C to 40°C</li> <li>• Operating Humidity:5% to 90% (Non-Condensing)</li> </ul>
<b>Dimension</b>	<ul style="list-style-type: none"> <li>• 160 * 266 * 43mm</li> </ul>
<b>Certification</b>	<ul style="list-style-type: none"> <li>• FCC, CE, LVD</li> </ul>

## Application



## Ordering information

**RP-PE844H** 8-P Fast Ethernet Switch, w/ 4-P PoE+