

RP-PE800A

8-P Fast Ethernet PoE+ Switch

The RP-PE800A is a 8-port Fast Ethernet PoE Switch. It is ideal for micro-segmenting large networks into smaller, connected subnets for improved performance, enabling the bandwidth demanding multimedia and imaging applications. Moreover, the 10/100Mbps auto-sensing ability provides an easy way to migrate 10Mbps to 100Mbps network.

This switch supports 802.3at PoE standard, which supplies power to connected devices via CAT 5 and above twisted cables. By integrating the data transmitting and power supply, it eliminates the effort constructing your network. You could easily connect a Wireless AP or a VoIP phone to this switch without arranging outlets for them. In addition, over current protection and circuit shorting protection are also supported to ensure the power supply safety.

The RP-PE800A supports plug-and-play without any software to configure and is also fully compliant with all kinds of network protocols. Moreover, the rich diagnostic LEDs on the front-panel provide the clear operating status of individual port and whole system.



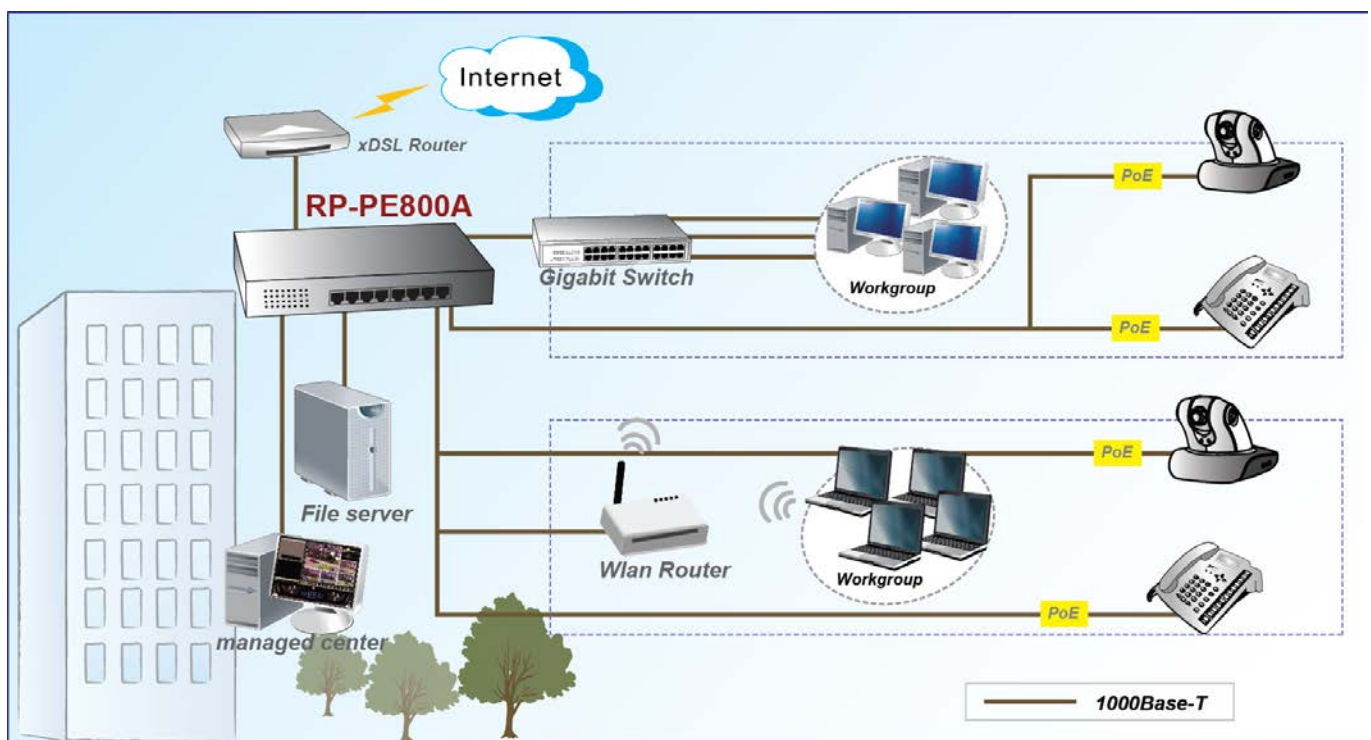
Features

- Comply with 10BASE-T specifications of the IEEE802.3 standard
- Comply with 100BASE-TX specifications of the IEEE802.3u standard
- Support NWay protocol for speed (10/100Mbps) and duplex mode (Half/Full) auto-detection
- Support MDI/MDI-X auto crossover
- Comply with IEEE 802.3at/af PoE standard
- Support 30W maximum per PoE port
- Support over current protection and circuit shorting protection
- Wire-speed packet filtering and forwarding rate
- Store-and-forward architecture filter fragment & CRC error packets
- Support extensive LED indicators for network diagnostics
- 11" Metal Case, support optional rack-mounting kits

Specifications

Standards	<ul style="list-style-type: none"> • IEEE 802.3 10 BASE-T • IEEE 802.3u 100 BASE-TX • IEEE 802.3x Full-duplex and Flow Control • IEEE 802.3at/af Power Over Ethernet
Interface	<ul style="list-style-type: none"> • 8* 10/100Mbps RJ-45 ports
MAC Address	<ul style="list-style-type: none"> • 4K
Buffer Memory	<ul style="list-style-type: none"> • 1.625M bits
Filtering/Forwarding Rates	<ul style="list-style-type: none"> • 100Mbps port - 148,800pps • 10Mbps port - 14,880pps
Transmission Media	<ul style="list-style-type: none"> • 10BaseT Cat. 3, 4, 5 UTP/STP • 100BaseTX Cat. 5 UTP/STP
PoE specification	<ul style="list-style-type: none"> • PD classification identify • PoE over current protection • PoE circuit sorting protection • Power PIN Assignment 1/2(-), 3/6(+)
LED Indicators	<ul style="list-style-type: none"> • System: Power • Port: Link/Act, PoE Act • Per Port: Link / Act, PoE • PoE Port: Act / Status
PoE power budget	<ul style="list-style-type: none"> • Per PoE port 30 W • Total Power for PoE 150W Max
Power Supply	<ul style="list-style-type: none"> • Internal Power Adapter 100~240VAC, 50/60 Hz
Environment	<ul style="list-style-type: none"> • Operating temperature : 0°C to 50°C • Operating Humidity:10% to 90% (Non-Condensing)
Dimension	<ul style="list-style-type: none"> • 280 * 185 * 44mm
Certification	<ul style="list-style-type: none"> • FCC, CE, LVD

Application



Ordering information

RP-PE800A 8-P Fast Ethernet PoE+ Switch (150W)