



## >> RP-3200R/ RP-3200RL

### 2- Gigabit Ethernet Adapter

The RP-3200R Adapter is an exciting new 10/100/1000Mbps high-speed Gigabit Ethernet Adapter. This model is equipped with an Auto-Negotiation function that automatically supports data transmission bandwidths ranging from 10Mbps ~ 2000Mbps. This function smoothly and automatically switches drivers between 1000Mbps, 100Mbps and 10Mbps, Full or Half Duplex, LAN connections. The Adapter runs in 32-bit bus master mode. The device comes with drivers for all major operating systems.



### Features

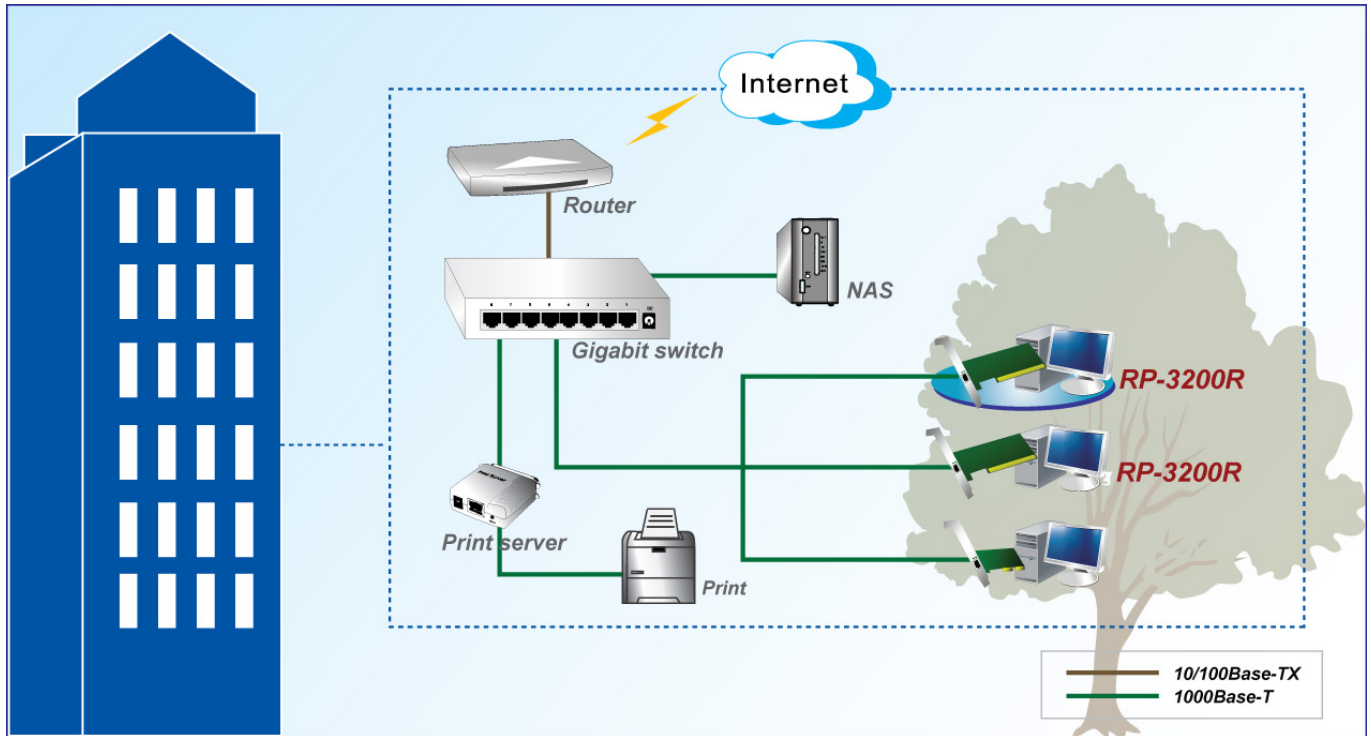
- Compliant with 10/100/1000 Mbps Full/Half Duplex triple-speed operation
- Supports Full Duplex flow control (IEEE 802.3x)
- Supports VLAN tagging (IEEE 802.1q)
- IEEE 802.1p Priority queuing for 4 classes of priority queues
- Supports Crossover Detection & Auto-Correction
- Supports Power-down/Link-down power saving
- 8K bits for transmit buffer, 64K bits for receive buffer

### Specifications

<b>Standards</b>	<ul style="list-style-type: none"> <li>• IEEE 802.3ab 1000Base-T</li> <li>• IEEE 802.3u 100Base-TX</li> <li>• IEEE 802.3 10Base-T</li> <li>• IEEE 802.3z/ IEEE 802.1p</li> </ul>
<b>Connector</b>	<ul style="list-style-type: none"> <li>• 1*10/100/1000Mbps RJ-45 port</li> </ul>
<b>Bus Type</b>	<ul style="list-style-type: none"> <li>• Supports 32-bit PCI v2.2, 66 or 33MHz bus speed</li> </ul>
<b>Network Media</b>	<ul style="list-style-type: none"> <li>• 1000Base-T (4 pair Cat.5 TP Cable required)</li> <li>• 100Base-T (2 pair Cat.5 TP Cable required)</li> <li>• 10Base-T (2 pair Cat.3, 4 and 5 TP Cable required)</li> <li>• Full Duplex available in three mode</li> </ul>
<b>Support OS</b>	<ul style="list-style-type: none"> <li>• Windows 98SE/ME/NT4.0/2000/XP/VISTA/7/8</li> <li>• Linux kernel 2.4.x</li> <li>• Novell Server 4.x/5.x</li> <li>• Novell Client for DOS</li> </ul>

<b>Environment</b>	<ul style="list-style-type: none"> <li>• Operating Temperature : 0°C to 50°C</li> <li>• Operating Humidity: 10%~90% (Non-Condensing)</li> </ul>
<b>Dimension</b>	<ul style="list-style-type: none"> <li>• 130*120mm</li> </ul>
<b>Certification</b>	<ul style="list-style-type: none"> <li>• CE,FCC</li> </ul>

## Application



## Ordering information

**RP-3200R**

Gigabit Ethernet Adapter

**RP-3200RL**

Gigabit Ethernet Adapter, w/ Low Profile Bracket