



RP-3000EX /V

Gigabit Fiber PCI Express Adapter

RP-3000EX /V is a Fiber Gigabit Ethernet to PCIe bus adapter that fully compliant with all IEEE 802.3z and 1000Base-SX standards. It provides up to 2000Mbps full-duplex bandwidth capacity to support high-end servers. In addition, with advanced functions like VLAN filtering packet processing, the adapter provides enhanced performance, flexible configuration and secure networking for users in a standard-based environment. Two LED indicators (LINK/ACT and FDX) on the bracket will help users to oversee the board link, activities and full-duplex status.



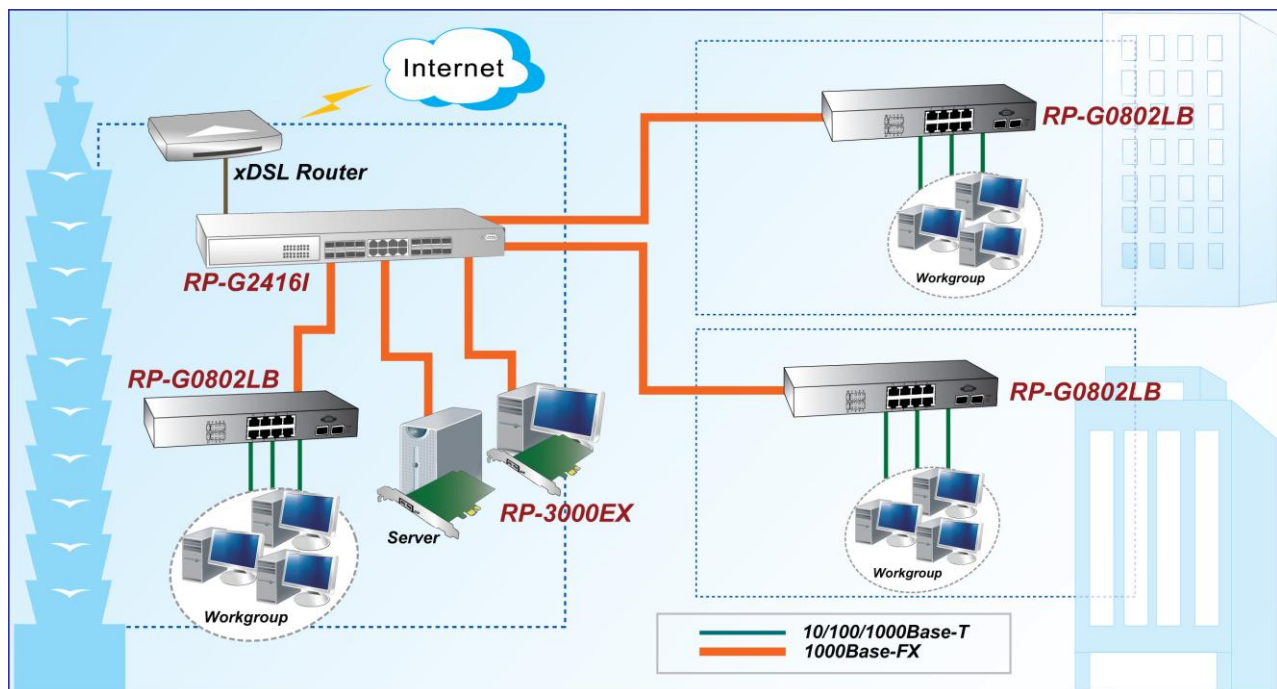
Feature

- High bandwidth 1000Mbps Network Speed
- Supports Full-Duplex Mode
- Supports IEEE 802.3x Full-Duplex Flow Control
- Supports PCI e x1 bus
- Compliant with PCIe Rev.1.1 Interface
- Supports Jumbo Frame Supports High Level VLAN Filtering Function
- Supports IP headers and TCP / UDP checksums offload
- Supports on-board screening of VLAN tagged Ethernet frames
- RoHS Compliance

Specification

Standards	<ul style="list-style-type: none"> • IEEE 802.3z Gigabit Ethernet 1000Base-SX • IEEE 802.3x Full-Duplex Flow Control • IEEE 802.1Q VLANs
Connector	• 850nm SC multi-mode
Fiber Optic Cable	<ul style="list-style-type: none"> • 62.5/125, 50/125m multi-mode • 9/125m single-mode
Data Transfer Mode/Speed	<ul style="list-style-type: none"> • Full duplex with NWay flow control • 1000Mbps speed
LED Indicator	• LINK/ACT, FDX
Bus Slot	• PCI-e 1.1 Compliant
Software Support	<ul style="list-style-type: none"> • Windows 98/ME, NT4.0, 2000, XP, 2003, Vista(32bit/64bit) • Novell Netware 4.x, 5.x, 6.x • Linux • PXE & RPL Boot ROM
Power Consumption	• 2.3W Max.
Power Requirement	• Max. 5W, +3.3VDC@1.5A
Environment	<ul style="list-style-type: none"> • Operating temperature : 0°C to 50°C • Operating Humidity:5% to 90% (Non-Condensing)
Dimension (PCB)	• 108(L) x 68.5(H)mm
Certification	• FCC, CE

Application



Ordering information

RP-3000EX /V Gigabit Fiber PCI Express Adapter

REPOTEC CO., LTD.

3F, No.258, Lian Cheng Rd., Chung Ho City, Taipei Hsien 235, TAIWAN
 TEL: 886-2-8227-1888 FAX: 886-2-8227-1818