

RP-2200EX

100Base-FX PCI Express Adapter, MM / SC



RP-2200EX is a Fiber Fast Ethernet to PCIe bus adapter that fully complies with all IEEE 802.3u and 100Base-FX standards. It provides up to 200Mbps full-duplex bandwidth capacity to support high-end servers. In addition, with advanced functions like VLAN filtering packet processing, the adapter provides enhanced performance, flexible configuration and secured networking for users in a standard-based environment. Two LED indicators (LINK/ACT and FDX) on the bracket will help users to oversee the board link, activities and full-duplex status.

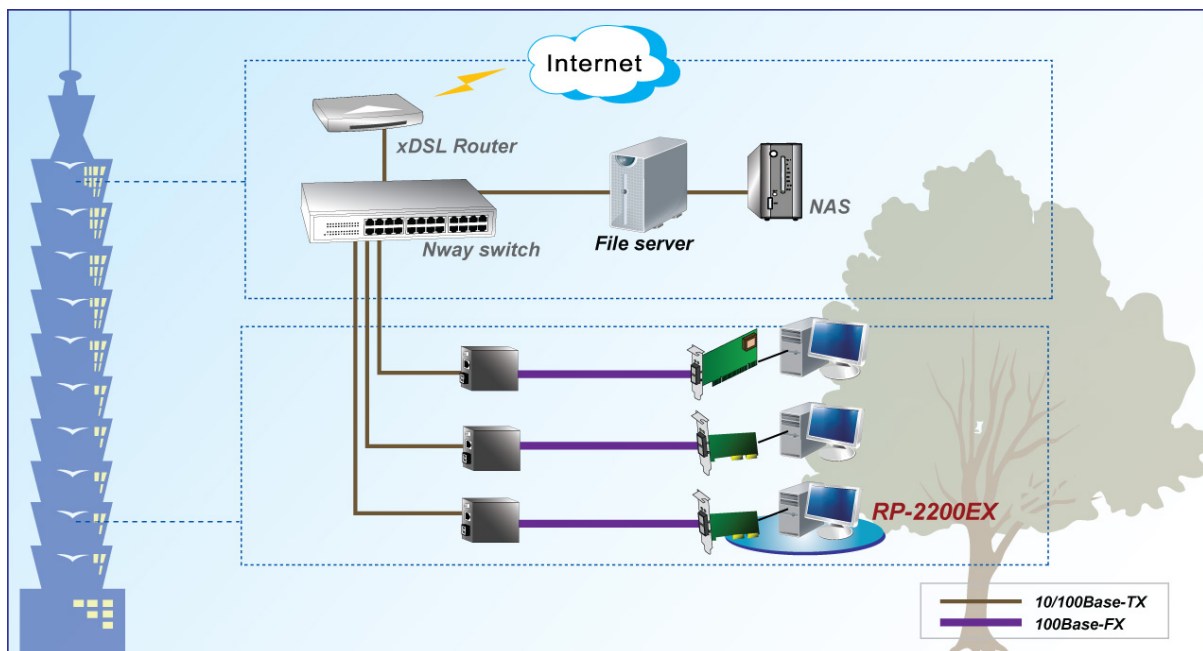
Features

- High bandwidth 100Mbps Network Speed
- Supports Full-Duplex Mode
- Supports IEEE 802.3x Full-Duplex Flow Control
- Supports PCI e x1 bus
- Compliant with PCIe Rev.1.1 Interface
- Supports Jumbo Frame
- Supports High Level VLAN Filtering Function
- Supports IP headers and TCP / UDP checksums offload
- Supports on-board screening of VLAN tagged Ethernet frames
- Supports Wake on LAN
- Supports ASF 2.0

Specifications

Standards	<ul style="list-style-type: none"> • IEEE 802.3u Fast Ethernet 100Base-FX • IEEE 802.3x Full-Duplex Flow Control • IEEE 802.1Q VLANs
Connector	<ul style="list-style-type: none"> • 1310nm SC multi-mode
Cable	<ul style="list-style-type: none"> • 62.5/125, 50/125m
Data Transfer Rate	<ul style="list-style-type: none"> • Full duplex with flow control • 100Mbps speed
LED	<ul style="list-style-type: none"> • LINK (Green) • FDX (Amber)
Bus Slot	<ul style="list-style-type: none"> • PCIe 1.1 Compliant
Software Support	<ul style="list-style-type: none"> • Windows 2003 Server • Windows 2008 Server • Windows XP, • Vista • Windows 7 • Novell Netware 5.x, 6.x • Linux • PXE & RPL Boot ROM
Power Requirement	<ul style="list-style-type: none"> • Max. 2.4W, + 3.3VDC@ 0.7A
Environment	<ul style="list-style-type: none"> • Operating temperature : 0°C to 50°C • Operating Humidity:5% to 90% (Non-Condensing)
Dimension	<ul style="list-style-type: none"> • 108 * 68.5mm
Certification	<ul style="list-style-type: none"> • FCC, CE

Application



Ordering information

RP-2200EX 100Base-FX PCI Express Adapter, MM / SC