



RP-GS2026IX

20-P SFP(100/1G) + 4-SFP/TP combo + 2-SFP(1G/10G) L2+ Managed Switch



RP-GS2026IX is a cost efficient and high-performance L2 Ethernet managed switch - 20-port (100/1G) SFP+ 4-Port SFP/RJ45 combo + 2-Port(1G/10G) SFP+ are supported.

RP-GS2026IX supports remote management by SNMP, Http and Telnet interfaces, and local management by console interface. It offers full suite of comprehensive Layer 2 switching capabilities such as 802.1Q VLAN, 802.1x Port Security, Rate Control, Port Configuration, Port Mirroring, Port Statistics, QoS functions. The switch provides the ideal combination of affordability and capabilities for small- and medium-size businesses to build high-performance network efficiently.

RP-GS2026IX equips 2 10GbE connectivity, with 10 GbE uplink, the switch can handle extremely large amounts of data in a secure topology connecting to an enterprise backbone or high capacity servers.

Features

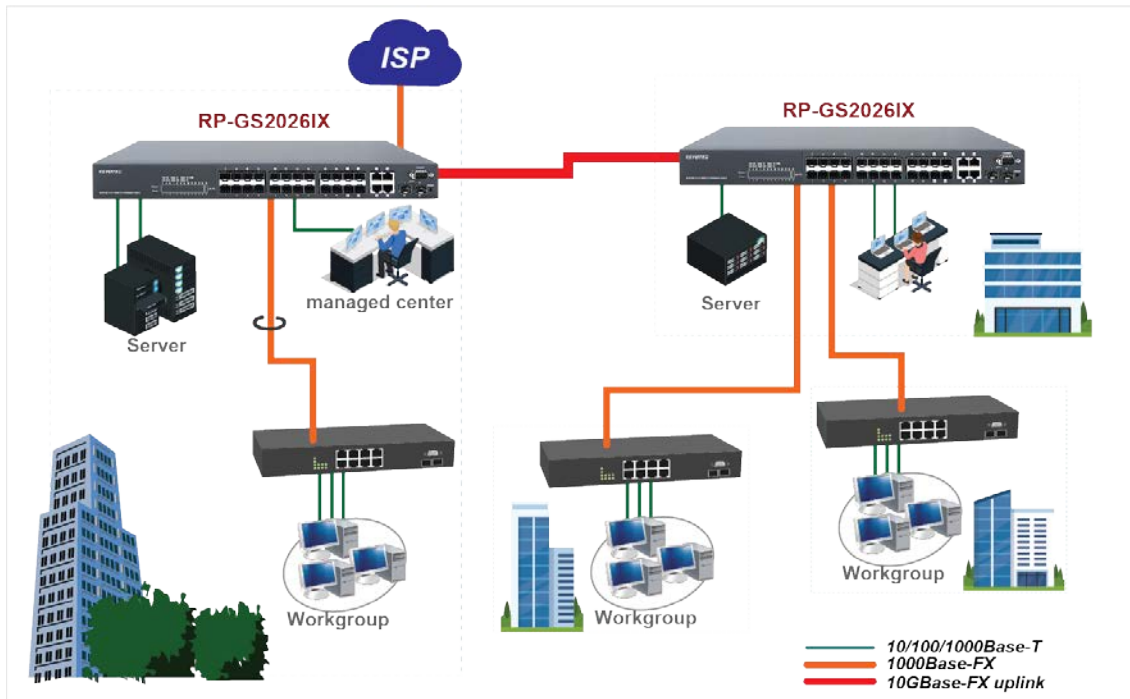
- 20 * SFP ports, support 100Base FX or 1000Base-X
- 4 * RJ45/SFP(100/1G) ports, auto-detect RJ45/SFP connection
- 2 * SFP+ ports, support 1000Base-X or 10Gbase-X
- IPv6 management
- IPv4 Static routing
- 8 priority queues are supported on each port for QoS application
- Port-based VLAN, 802.1Q VLAN, Voice VLAN and Q-in-Q(double tagging) function
- Protected Port and LoopBack Detection function
- IEEE 802.1x security function, and VLAN assignment, Guest VLAN functions
- Static Mac address access limit and Dynamic Mac address number on port
- IEEE802.1d & 802.1w & 802.1s
- IP Multicast with IGMP snooping / query / fast leave / filtering /group limited /MVR
- DHCP Client / DHCP Option 82 Relay / DHCP Snooping function
- ACL function for L2 ~ L4 packet control, Ingress/Egress rate control on port
- Broadcast/Multicast/Unicast storm control
- ARP inspection / IP source guard
- RMON 1,2,3,9
- SFP Transceiver DDMI function
- Remote port configuration setting and statistics monitoring
- Text configuration download and upload

Specifications

Standards	<ul style="list-style-type: none"> • IEEE 802.3 10Base-T Ethernet (twisted-pair copper) • IEEE 802.3u 100Base-TX Ethernet (twisted-pair copper) • IEEE 802.3ab 1000Base-T Ethernet (twisted-pair copper) • IEEE 802.3z 1000Base-SX/LX Ethernet
Interface	<ul style="list-style-type: none"> • Port1-24: 100/1G SFP Port • Port21-24: UTP/SFP Combo Port • Port25-26: 1G/10G SFP+ Port
Console Port	<ul style="list-style-type: none"> • DB9 console port
CPU	<ul style="list-style-type: none"> • 416MHz MIPS 24KEc CPU as the main processor which integrated on switch controller
Memory	<ul style="list-style-type: none"> • Flash : SPI 16M Bytes , RAM:DDRII 128M Bytes
Packet Buffer	<ul style="list-style-type: none"> • 2M Bytes
MAC Table Size	<ul style="list-style-type: none"> • 16K
Max Packet Size	<ul style="list-style-type: none"> • 9600 Bytes
Switching capability	<ul style="list-style-type: none"> • 14880pps at 10Mbps • 148810pps at 100Mbps • 1488095pps at 1Gbps with 64 bytes packets
Switch capacity	<ul style="list-style-type: none"> • 88Gbps
Forwarding Rate	<ul style="list-style-type: none"> • 65.5Mpps
Port Control	<ul style="list-style-type: none"> • Port speed, duplex mode, and flow control • Port Auto MDI/MDI-X • Port frame size (jumbo frames), Maximum ingress frame size (10056 bytes) • Port state (administrative status) • Port status (link monitoring) • Port statistics (MIB counters)
L2 Switching	<ul style="list-style-type: none"> • Auto MAC address learning/aging and MAC addresses (static) • DHCP snooping • ARP inspection • Port Mirroring • Flow mirroring
L3 Switching	<ul style="list-style-type: none"> • DHCP option 82 relay • UPNP • IPv4 Unicast: Static routing
VLANs	<ul style="list-style-type: none"> • IEEE 802.1Q static VLAN(4096 entries Max.), Voice VLAN, • Port isolation, Private VLAN Static, MAC based VLAN, • Protocol based VLAN, IP subnet based VLAN
Spanning Tree	<ul style="list-style-type: none"> • IEEE 802.1s MSTP(Multiple spanning tree) • IEEE 802.1w RSTP(Rapid spanning tree) • IEEE 802.1D STP(Spanning tree) • BPDU Guard & Restricted Role • Error Disable Recovery
Link Aggregation	<ul style="list-style-type: none"> • Static and LACP
IP Multicast	<ul style="list-style-type: none"> • IGMP v2 and v3 snooping • MLD v1 snooping • IGMP filtering profile • IPMC throttling, filtering, leave proxy • MVR and MVR profile
QoS	<ul style="list-style-type: none"> • Traffic Classes (8 active priorities) • Port Default Priority, User Priority,

	<ul style="list-style-type: none"> • Input priority mapping • QoS Control List (QCL Mode) • Storm Control for UC, BC and Unknown • Port policers • Global/VCAP (ACL) policers • Port egress shaper • Queue egress shapers • DiffServ (RFC2474) remarking • Tag remarking • Scheduler mode
Security	<ul style="list-style-type: none"> • Port-Based 802.1X, Single 802.1X, Multiple 802.1X, • MAC-Based Authentication • VLAN Assignment , QoS Assignment, Guest VLAN • RADIUS Accounting • MAC Address Limit • IP MAC binding, IP/MAC binding dynamic to static • TACACS+ • Web & CLI Authentication • Authorization (15 user levels) • ACLs for filtering/policing/port copy • IP source guard
Synchronization	<ul style="list-style-type: none"> • NTPv4 Client
Management	<ul style="list-style-type: none"> • DHCP Client, • DNS client, proxy • HTTP Server • CLI - Console Port & Telnet • Text Configuration download or upload • Management access filtering • HTTPS • SSHv2 • IPv6 Management • System Syslog • Software Upload via web • SNMP v1 / v2c / v3 Agent • RMON (Group 1, 2, 3 & 9) • RMON alarm and event(CLI,web) • SNMP multiple trap destinations • IEEE 802.1AB-2005 Link Layer Discovery LLDP • Cisco Discovery filtering - CDP • sFlow • Daylight Saving
SFP DDMI	<ul style="list-style-type: none"> • Support
LED Indicators	<ul style="list-style-type: none"> • Per Port : Link/Act Port 1-24: 1000Mbps(Green) / 10/100Mbps(Amber) Port25-26: 10G(Green) / 1000Mbps (Amber) • Per Device : Power and System
Power Supply	<ul style="list-style-type: none"> • Internal Power supply 100~240VAC, 50/60 Hz • Optional 48VDC power module
Environment	<ul style="list-style-type: none"> • Operating temperature: 0°C to 50°C • Operating Humidity: 10% to 90% (Non-Condensing)
Dimension	<ul style="list-style-type: none"> • 440 * 172 * 44 mm
Certification	<ul style="list-style-type: none"> • FCC, CE

Application



Ordering information

RP-GS2026IX 20-P SFP(100/1G) + 4-SFP/TP combo + 2-SFP(1G/10G) L2+ Managed Switch

RP-GS2026IX/D 20-P SFP(100/1G) + 4-SFP/TP combo + 2-SFP(1G/10G) L2+ Managed Switch
W/ DC Power Input Module

Optional:

MOD-GS48DC 48VDC power module for RP-GS2024I, RP-GS2026IX