



## >> RP-1708BD15

### 8-P Fast Ethernet + WDM Managed Switch

This is a cost-effective and high-performance 8-port 10/100 Mbps Ethernet/Fast Ethernet managed switch with Broadcom solution. There are eight RJ-45 connectors and one 100FX connector for the switch - with Port 1 of the switch could be TX or FX port depending on which port is link-up. So this switch could have 8 \* TX or 7 \* TX + 1 \* FX active ports, and the TX/FX function of Port 1 is auto-detected. This switch supports remote managed function by SNMP, HTTP and Telnet operations. And it supports lots of functions for a L2 switch managed, e.g. 802.1Q VLAN, 802.1x Port Security, Rate Control, Port Configuration, Port Mirroring, Port Statistics, and QoS functions. Auto MDI-X function is also supported for every TX port of the switch for easy cable connection.



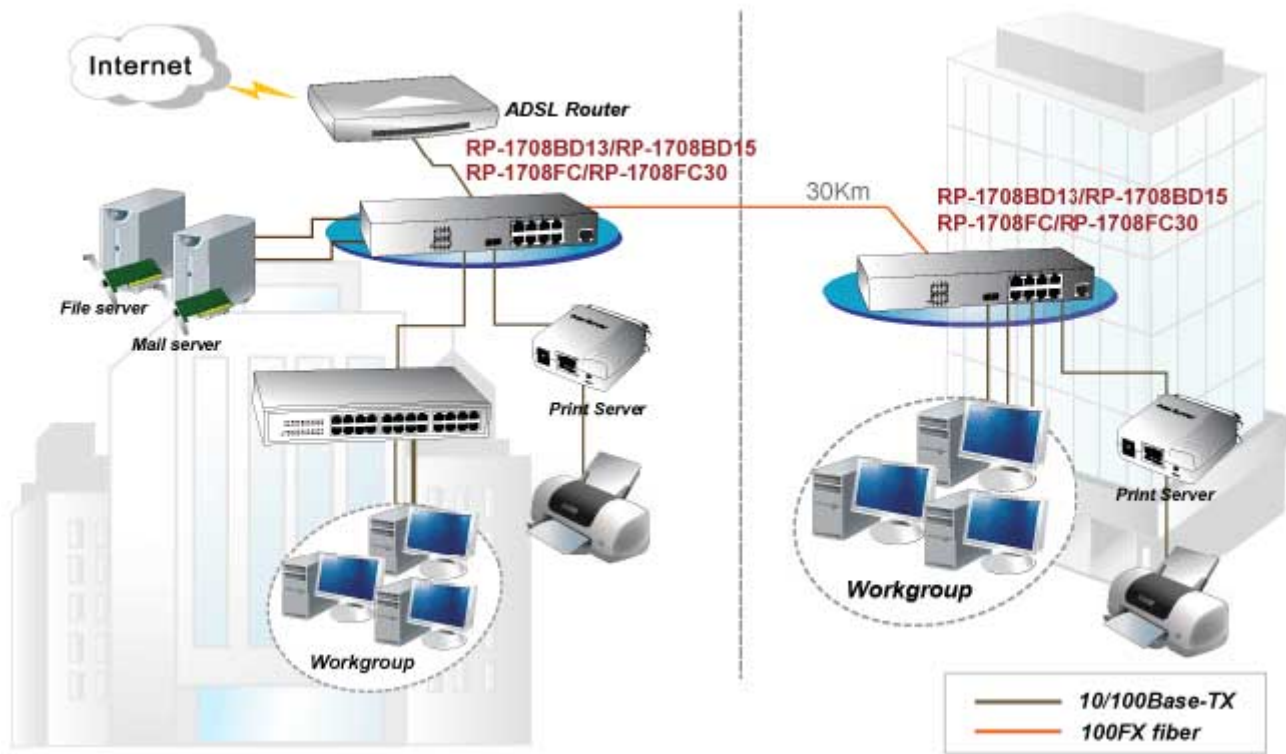
### Features

- Support out-band console and in-band SNMP/Http/Telnet management interface
- Prevents packet loss with back pressure and IEEE802.3x flow control functions
- Supports IEEE 802.1p Class of Service with 4-level priority queuing
- Support Static Mac Address access limit on port
- Support IEEE 802.1x Port Security function
- Support IEEE 802.1w Rapid Spanning Tree function
- Support broadcast/flooding/multicast traffic control
- Support Loopback detection function
- Support DHCP client function, Support RMON 1,2,3,9
- Support Text configuration download and upload
- Support remote port configuration setting and status monitoring

## Specifications

<b>Standards</b>	<ul style="list-style-type: none"> <li>• IEEE802.3(10BaseT Ethernet ), IEEE802.3u(100Base Fast Ethernet),</li> <li>• IEEE802.1D, IEEE802.1P, IEEE802.1Q, IEEE802.1x</li> </ul>
<b>Switching Capacity</b>	<ul style="list-style-type: none"> <li>• 8* RJ-45 10/100Mbps ports, 1* FX port with 100Mbps sharing with 1TX port</li> <li>• RJ-45 console port</li> <li>• 256K Bytes Packet Buffer, 4K Mac Table, 1536 bytes Max Packet Size</li> </ul>
<b>Flow Control</b>	<ul style="list-style-type: none"> <li>• Back pressure for half duplex, IEEE802.3x for full duplex</li> </ul>
<b>Management Security</b>	<ul style="list-style-type: none"> <li>• Out-band: Console (Command Line Interface)</li> <li>• In-band: SNMP/Telnet/Http</li> <li>• SNMP agent: Version. I, II, III, Support MIB II(Interface), Bridge MIB, Etherlike MIB, Private MIB</li> </ul>
<b>VLAN</b>	<ul style="list-style-type: none"> <li>• 802.1Q VLAN, 256 co-current groups maximum from eight active VLAN ID blocks</li> </ul>
<b>QoS</b>	<ul style="list-style-type: none"> <li>• 4 priority queues per port, Port-based &amp; 802.1p tagged-based/ToS</li> <li>• DiffServ priority operation , WRR/SPQ scheduling algorithm</li> </ul>
<b>Spanning Tree</b>	<ul style="list-style-type: none"> <li>• Support IEEE 802.1w Rapid Spanning Tree</li> </ul>
<b>Port Mirror</b>	<ul style="list-style-type: none"> <li>• Egress/Ingress packets, support DA/SA filtering function</li> </ul>
<b>IEEE 802.1x</b>	<ul style="list-style-type: none"> <li>• Support Transparent and Authentication modes</li> </ul>
<b>Rate Control</b>	<ul style="list-style-type: none"> <li>• Limit on port for both Ingress/Egress traffic from 64Kbps to 100Mbps</li> </ul>
<b>IP Multicast</b>	<ul style="list-style-type: none"> <li>• Support IGMP Snooping and MVR function</li> </ul>
<b>LED Display</b>	<ul style="list-style-type: none"> <li>• Per Port: Link/Activity(Speed), FDX, Per Device: Power</li> </ul>
<b>Power Supply</b>	<ul style="list-style-type: none"> <li>• Internal Power AC100~240V, 50/60 Hz, Power Consumption: 6.5W</li> </ul>
<b>Environment</b>	<ul style="list-style-type: none"> <li>• Operating Temperature: 0°C to 50°C</li> <li>• Operating Humidity:5% to 95% (Non-Condensing)</li> </ul>
<b>Dimension</b>	<ul style="list-style-type: none"> <li>• 250 * 117 * 37mm</li> </ul>
<b>Certification</b>	<ul style="list-style-type: none"> <li>• FCC, CE</li> </ul>

# Application



## Ordering information

**RP-1708BD15** 8-P Fast Ethernet + WDM TX:1550nm (15Km) Managed Switch